

Doktorandusz elégedettség

Doktorandusz elégedettség ANGOL_2025 ()

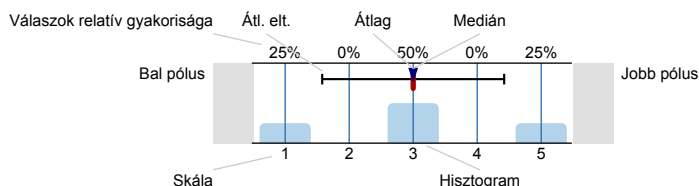
Válaszadók száma = 8



Felmérés eredmények

Jelmagyarázat

Kérdésszöveg



n=mennyiség
 átl.=átlag
 md=Medián
 elt.=Átl. elt.
 tart.=tartózkodás

1.

Dear Respondents,

The aim of this questionnaire is to assess the level of satisfaction of doctoral graduate students with regard to their studies at the School of Linguistics, University of Debrecen. It is in the best interest of all of us to ensure that the doctoral programmes fulfill their task of training young scholars who will be able to meet the challenges of pursuing a successful academic career. To achieve this aim, it is necessary to have regular feedback from our students. This is where your help is needed now. In the evaluation form below, part of a series of measures designed to improve the quality of our programme, you are kindly asked to give feedback about your experiences as a doctoral student in the past academic year. Rest assured that your response will be taken very seriously, helping us improve the academic and institutional environment of your doctoral studies. Please note that your answers cannot be 'wrong' as long as they express your own opinions and impressions, and that filling in the questionnaire is voluntary and anonymous. Thank you for taking the time to assist us in improving our doctoral programme.

1.1) Please select the doctoral (sub)programme to which you are affiliated

Doctoral programme of general and applied linguistics: English linguistics	<input type="text"/>	87,5%	n=8
Doctoral programme of general and applied linguistics: German linguistics	<input type="text"/>	0%	
Doctoral programme of general and applied linguistics: Romanistics	<input type="text"/>	12,5%	

1.2) Where did you hear of our programme?

I read about in on the Internet	<input type="text"/>	75%	n=8
from other students	<input type="text"/>	0%	
from elsewhere	<input type="text"/>	25%	

1.4) Please select the category that describes your current status:

Doctoral student before the complex exam	<input type="text"/>	25%	n=8
Doctoral student after the complex exam	<input type="text"/>	12,5%	
Doctoral student having obtained the absolution	<input type="text"/>	62,5%	
Doctoral candidate	<input type="text"/>	0%	
Other	<input type="text"/>	0%	

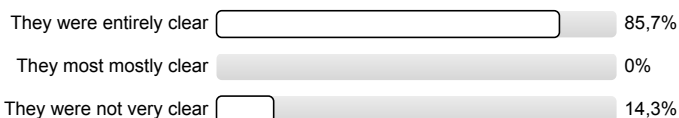
1.6) Do you have a co-supervisor?

Yes I do (I did formerly)	<input type="text"/>	12,5%	n=8
No I don't (and I never had)	<input type="text"/>	87,5%	

1.7) Please select the type of financial framework or scheme that is relevant in your case:

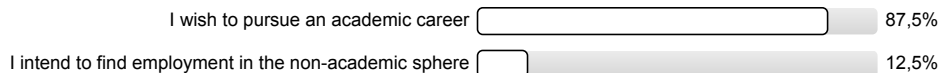
I am a fee paying student	<input type="text"/>	0%	n=8
I receive a stipend	<input type="text"/>	0%	
I receive a Stipendium Hungaricum stipend	<input type="text"/>	100%	

1.8) Were the requirements for the student's admission in the Doctoral Programme clear?



n=7

1.9) What are your plans after obtaining your degree?

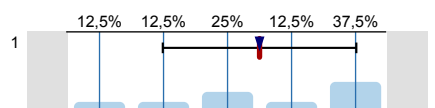


n=8

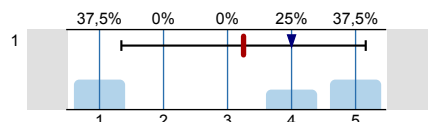
General feedback on the doctoral school/programme. Please indicate on a scale of 1 to 5 your assessment of the conditions of the doctoral training

(1 – not satisfied at all; 2 - not really satisfied; 3 – more or less satisfied; 4 – fairly satisfied; 5 – very satisfied)

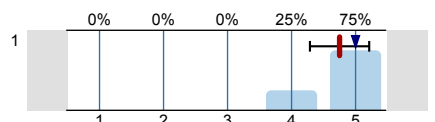
1.10) In general, are you satisfied with the academic level of the doctoral (sub)programme?

n=8
átl.=3,5
md=3,5
elt.=1,5

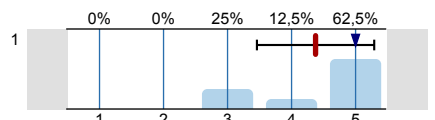
1.11) Do you receive academic guidance and assistance from other instructors of your doctoral (sub)programme/school when you need it? (1=never; 5= always)

n=8
átl.=3,3
md=4
elt.=1,9

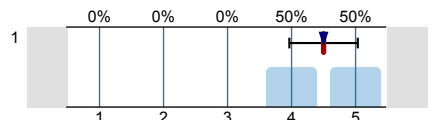
1.12) Please indicate on the scale the degree of your satisfaction with the efficiency and helpfulness of the school's administrative offices

n=8
átl.=4,8
md=5
elt.=0,5

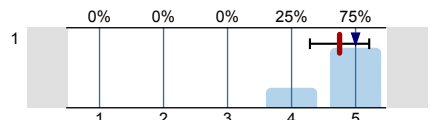
1.13) Please indicate on the scale the degree of your satisfaction with the IT services provided by your doctoral programme/school (e.g. IT equipment and Internet connection were suitable for all activities)

n=8
átl.=4,4
md=5
elt.=0,9

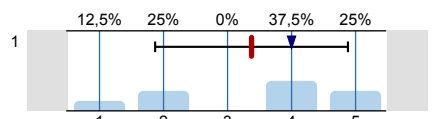
1.14) Please indicate on the scale the degree of your satisfaction with the library facilities, library and database services provided by your doctoral programme/school.

n=8
átl.=4,5
md=4,5
elt.=0,5

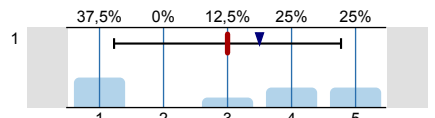
1.15) Please indicate on the scale the degree of your satisfaction with the way information is made available in your doctoral programme/school (websites, email notifications, notice boards etc.). Are you always properly informed about the deadlines and administrative procedures of the doctoral school/programme?

n=8
átl.=4,8
md=5
elt.=0,5

1.16) Are you satisfied with the existing procedures of monitoring of your research activity and progress?

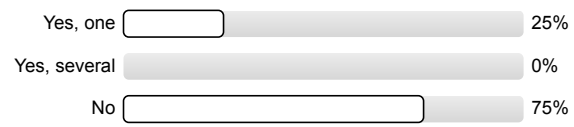
n=8
átl.=3,4
md=4
elt.=1,5

1.17) External instructors and experts were extensively involved in the activities and in the assessment of your academic performance and progress. (1=no external experts; 5= sufficient number of external experts)

n=8
átl.=3
md=3,5
elt.=1,8

1.18)	The workload required by structured training activities (courses, seminars, workshops) allowed me to dedicate enough time to my research activity and thesis (1=I was left with no time for my research; 5= ample time was left for my research)		n=8 átl.=4,3 md=4,5 elt.=1
1.19)	Please indicate on the scale the level of your satisfaction with your thesis supervisor.		n=8 átl.=3,6 md=5 elt.=1,9
1.20)	I consider my thesis supervisor competent in my research topic		n=7 átl.=4,4 md=5 elt.=1,5
1.21)	My thesis supervisor provides sufficient and adequate consultation opportunities for me		n=8 átl.=3,8 md=5 elt.=1,8
1.22)	The academic guidance provided by my thesis supervisor is helpful in my progress		n=8 átl.=3,6 md=5 elt.=1,9
1.23)	My thesis supervisor helps me find publication venues and advises me on various options, including the pros and cons of types of publication and publication venues.		n=8 átl.=3,4 md=4,5 elt.=2
1.24)	My thesis supervisor supports and advises me regarding conference participation opportunities		n=8 átl.=3,9 md=5 elt.=1,6
1.25)	My thesis supervisor regularly assesses my academic progress		n=8 átl.=3,9 md=5 elt.=1,6
1.26)	Is there a dedicated workspace for each PhD student on your campus? Are the available infrastructure and resources adequate for the purposes of your research? (1= no such workspace; 5=very adequate)		n=8 átl.=2,4 md=1,5 elt.=1,8
1.27)	Are you satisfied with the types, quality and availability of sports and training facilities in the campus?		n=8 átl.=3,6 md=3,5 elt.=1,1
1.28)	To what extent do you feel that the campus is a safe space?		n=8 átl.=4,6 md=5 elt.=0,5
1.29)	If you could go back, would you still enroll in this programme/choose to work with your supervisor?		n=8 átl.=3,5 md=5 elt.=2,1

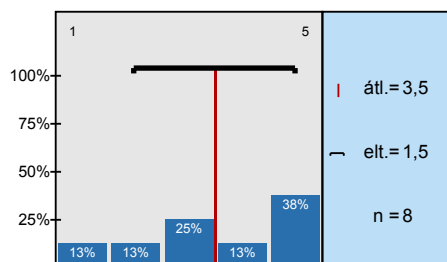
1.31) **Do you have joint publications with your supervisor(s)?**



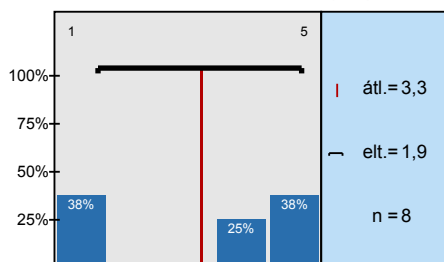
n=8

Hisztogram skálázott kérdésekhez

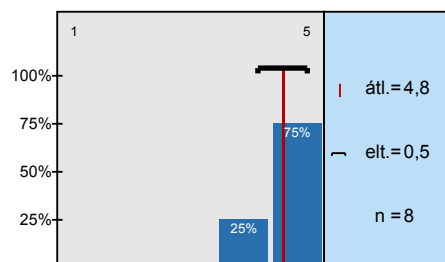
In general, are you satisfied with the academic level of the doctoral (sub)programme?



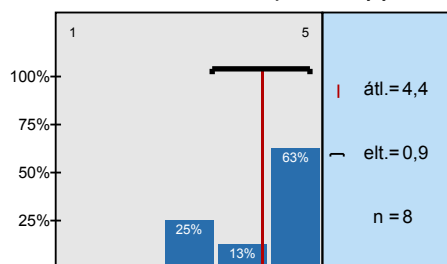
Do you receive academic guidance and assistance from other instructors of your doctoral (sub)



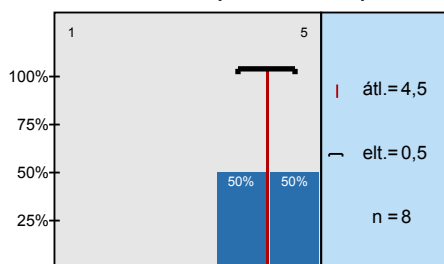
Please indicate on the scale the degree of your satisfaction with the efficiency and helpfulness of



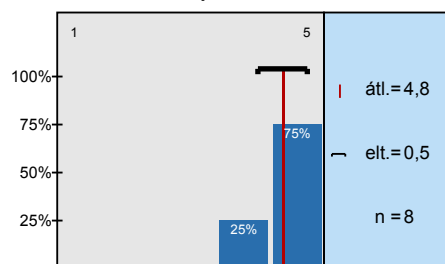
Please indicate on the scale the degree of your satisfaction with the IT services provided by your



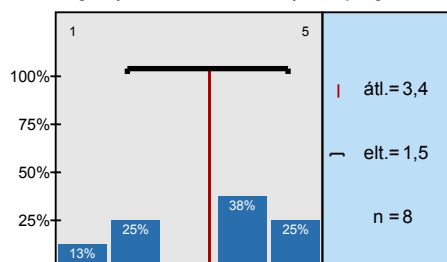
Please indicate on the scale the degree of your satisfaction with the library facilities, library and



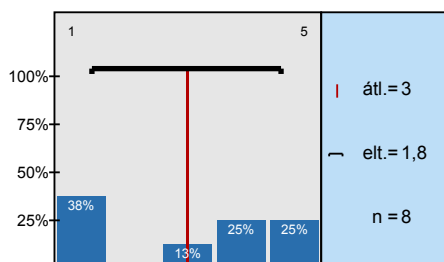
Please indicate on the scale the degree of your satisfaction with the way information is made



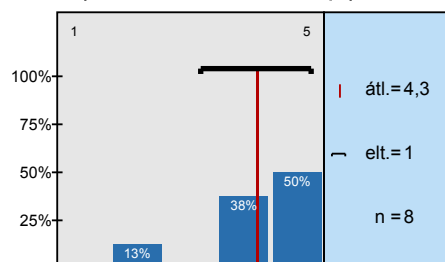
Are you satisfied with the existing procedures of monitoring of your research activity and progress?



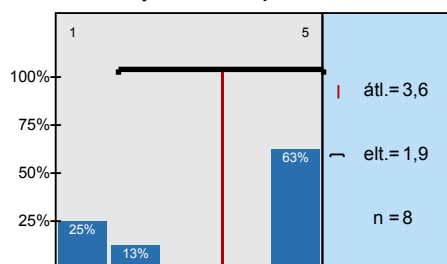
External instructors and experts were extensively involved in the activities and in the assessment of



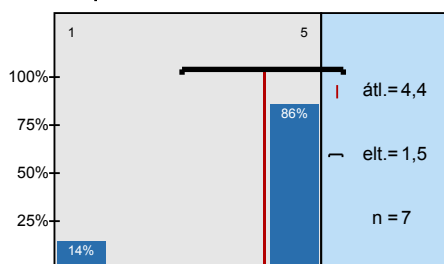
The workload required by structured training activities (courses, seminars, workshops) allowed



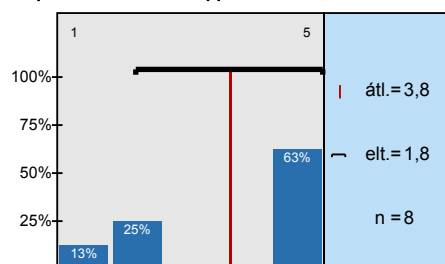
Please indicate on the scale the level of your satisfaction with your thesis supervisor.



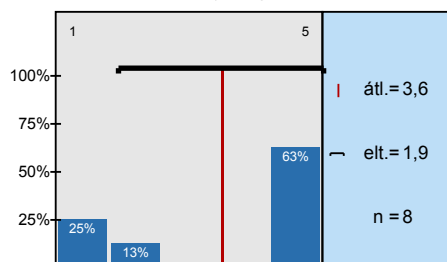
I consider my thesis supervisor competent in my research topic



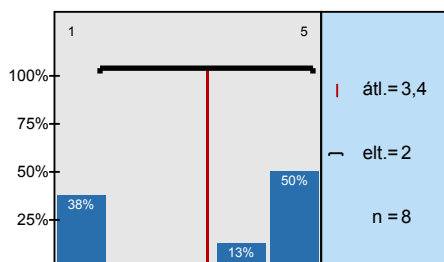
My thesis supervisor provides sufficient and adequate consultation opportunities for me



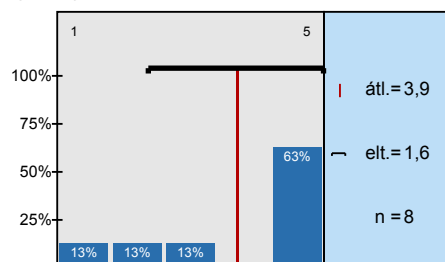
The academic guidance provided by my thesis supervisor is helpful in my progress



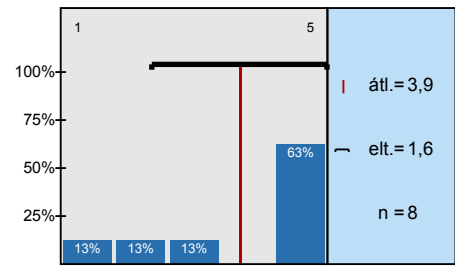
My thesis supervisor helps me find publication venues and advises me on various options,



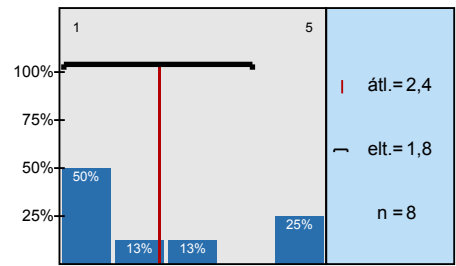
My thesis supervisor supports and advises me regarding conference participation opportunities



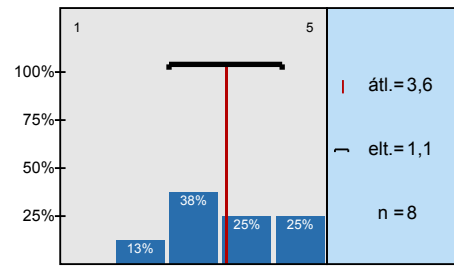
My thesis supervisor regularly assesses my academic progress



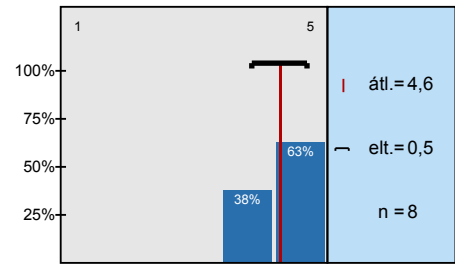
Is there a dedicated workspace for each PhD student on your campus? Are the available



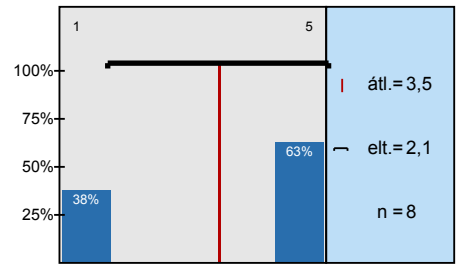
Are you satisfied with the types, quality and availability of sports and training facilities in the



To what extent do you feel that the campus is a safe space?



If you could go back, would you still enroll in this programme/choose to work with your supervisor?

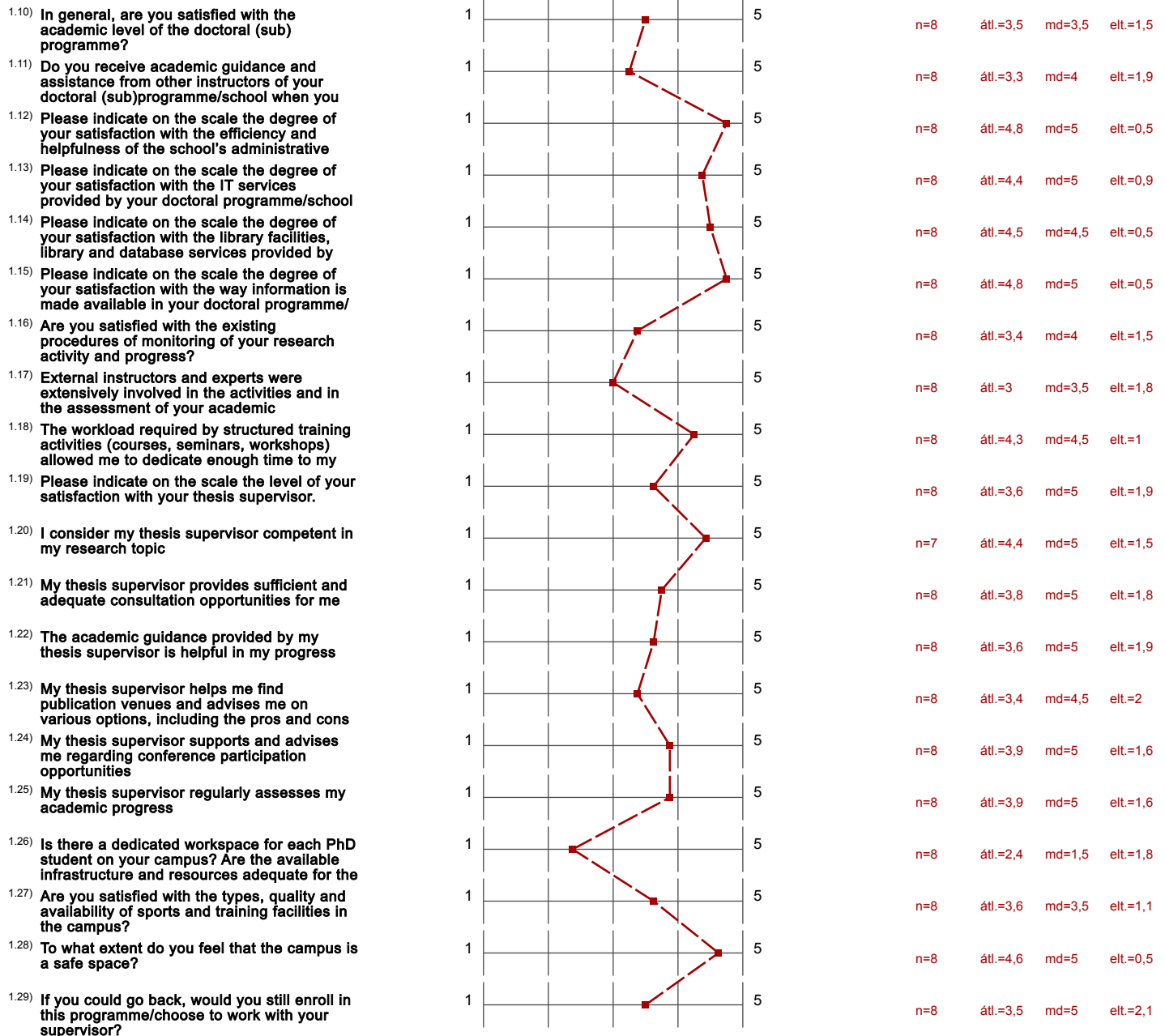


Profil

Alegység: Nyelvtudományok Doktori Iskola
 Tanár neve: Doktorandusz elégedettség
 Kurzus neve: Doktorandusz elégedettség ANGOL_2025
 (A felmérés neve)

A profilvonalban használt értékek Átlag

1.



Hozzászólások jelentése

1.

1.3) Why did you choose this programme?

- Because it matches my previous academic studies and what I aspire to achieve in the future. (2 előfordulás)
- Because my bachelor and master degree are also English linguistics.
- Hungry offers a good opportunity for students to learn new approaches in linguistics and to practice them as well. The profiles for teachers were impressive regarding their researches.
- I got selected for the Stipendium Hungaricum scholarship and I read on the internet that this program is good.
- It best matched my academic background and career goals.
- To achieve my career goals of becoming a lecturer in the future.

1.30) In the space below, please identify the three most important areas in which, in your opinion, the doctoral programme/school might improve.

- 1- supervisor quality.
2- courses quality.
3- diversity in research areas.
- 1.
- 1. Provision of offices for PhD students to enhance their work.
2. There should be capacity building courses for PhD students
3. Provision of enough funds to support conferences abroad to gain enough experience.
- 1. workspace for PhD students.
2. I am satisfied with other parts.
- Increased scholarship funding. Career development support. Interdisciplinary opportunities.
- Provide more specialized courses.
Facilitate students' participation in Academic conferences.
Facilitate students' publications.
- The linguistic faculty has nothing to improve. Everything is great.

1.32) In the space below, please indicate areas in your collaboration with your supervisor that, in your opinion, could be improved.

- I am totally satisfied with my supervisor.
- I have enjoyed working with him and he has been very supportive. I think I like everything about him.
- My supervisor guides me always. He has a special attention to all details regarding work.
- My supervisor refused several times to collaborate with me although my research area is very close to his. He even wrote articles about my research topic, but still refused to collaborate with me or even give me pieces of advice and guidance.
- The collaboration is very good.
- The supervisor needs to take their supervision responsibilities more seriously and subjectively. In addition to providing proper academic guidance for their students.

1.33) Observations. Please feel free to comment on any other aspect not included in this survey, any clarification you might need about how to evaluate some of the items, etc.

- -
- I am very dissatisfied with this doctoral program due to mainly one reason: my supervisor. I had been constantly harassed and mistreated by him calling my work "stupid" and refusing to guide me (for example, when I ask him to provide me with readings he replies by saying that it is not his job). He always refused to collaborate with me and always discouraged me to go to conferences and always said that people would make fun of my work. I had a high GPA in my Masters degree at the University of Debrecen, and I'm a very good student, but I will have to abandon this program because of my supervisor's treatment. I talked to the doctoral school about this situation, they first promised to help but then ended up not replying to my emails. I tried to file a complaint about this, but was unsuccessful due to the lack of help. Overall, I had the worst experience in this program and I would not recommend it to anyone. I

would love to file a complaint if I can so no one else is mistreated like I was.

- I think the survey touched on all the relevant points.